

WILC 2018 Annual Report

January 16, 2019 Meeting

501 (c) 3 Autism Specific Non - Profit Educational



Organization
262-332-7334



We own our building (with the Waukesha State Bank)! We have nonprofit status and are property tax exempt for the 1936 MacArthur Waukesha Building.

January 1 , 2018 to December 31, 2018 WILC Information

How do we pay for it all? IRIS, DVR, GALA, Donations, Grants, and our Volunteers!

IRIS and DVR Income: Staff salary is paid through IRIS and DVR income. Cost per hour for tuition was raised for the first time at WILC since 2012 from \$34 to \$38 per hour for individual / group participation, and \$45 per hour for intense individual needs. DVR rates vary for every report and activity. The rate change helped to afford to hire and train more staff members. This year two students graduated from WILC and seven new students joined WILC from May to September. Many of our students have increased the amount of time at WILC. Seventeen students participate at WILC and or DVR services. IRIS and Tuition Income is provided through three different IRIS Financial Management Service: iLife, GT Independence, and Premier and we work with the School District of Waukesha/Elmbrook School Districts. Families have expanded time at WILC prior to offering positions to those families on the waiting list.

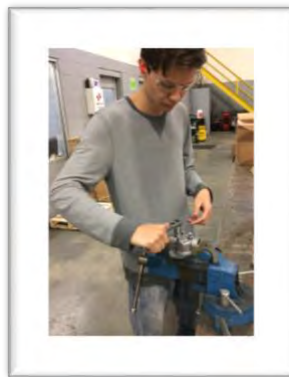
New WILC website: More secure and completely updated. <https://www.wisconsinilc.org> Along with more info on our programs, board, staff, and calendar, all WILC 990 Nonprofit tax forms are viewable for better financial transparency for years 2012-2017. More financial info about us and our Guidestar Gold Rating: <https://www.guidestar.org/profile/45-4309128> .

Full Time Staff: Susie Thomas, Program and Vocational Coordinator; Ben Friske, Lead Instructor; Breanne Duvall, Lead Instructor; 2018 Spring: Jennifer Lytle, Employment Specialist; Kaycie Kelly Employment Specialist/EMT, Jeanne Evans, Instruction Assistant and Terri Johnson, Executive Director.



Part time Staff: Job Coach; Deanna Sobieski, Crystal Petrie, Instruction Assistant; Part time Job Coach. Welcome December 2018 Valerie Nelson, part time Job Coach; and Dina Visuri, Yoga.

Department of Vocational Rehabilitation or DVR: Supported and Customized employment successes!

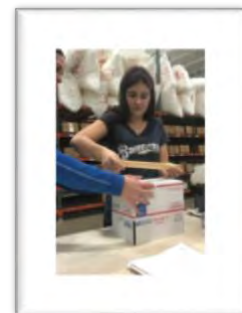
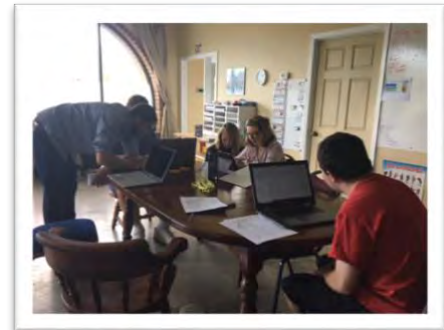


After we establish a working relationship with our students, learning from them at WILC and in the community, when ready they are moved toward DVR. Many of our students are now working permanent paying part time jobs after training in paid work experiences with WILC as their DVR Vendor. Four students were placed in these jobs through WILC as their vendor and two students through their local DVR vendor. Two chose to find a second job or change

jobs. Six other students participated in one or more paid temporary work experiences of their choice in 2018. We are so proud of these students pushing boundaries and working hard at their jobs.

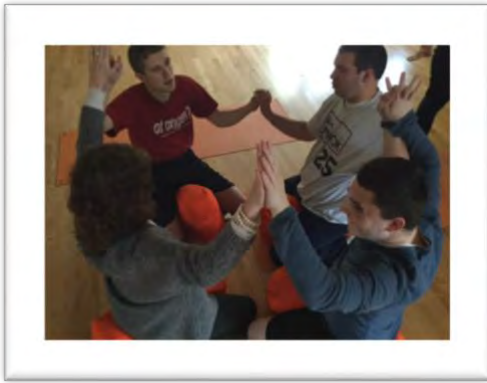
Several students are interested in becoming involved in 2019 with WILC and DVR. All WILC students are involved in various volunteer opportunities. New staff and job coaches were hired trained in 2019 to meet these needs.

This leads to more opportunities for vocational successes for our WILC students with various DVR job shadows, work experiences with companies that want to hire our students increasing the potential for permanent part time job hires in student's home areas! Working with the Waukesha Business Alliance Susie Thomas has established new relationships with companies very interested in having our students work. Our loyal focused hard-working young adults have good work attendance and strong personal drive. Who wouldn't want them as their employee once they know their potential?



Construction Loan Completion: WILC has almost finished paying off a 2016 \$40,000 construction loan since 2016 which was used for materials and contractors along with donated materials and volunteers, and in-kind work to upgrade our building, meeting the unique sensory and safety needs of our students with autism. After the final cabinets, flooring and dishwasher/sink are installed in our kitchen, we plan on painting the outside of our building.

WILC 2018 November Gala raised \$40,000 after expenses at our new venue, the Milwaukee Marriott West with 220 guests and many volunteers. We had many positive surveys regarding the Gala experience and good suggestions for next year, November 1, 2019. Thanks go to Connoils LLC for donating \$5,000 to us. All donations go directly toward student programs, providers, transportation and special events and building/ improvements to our Waukesha facility.

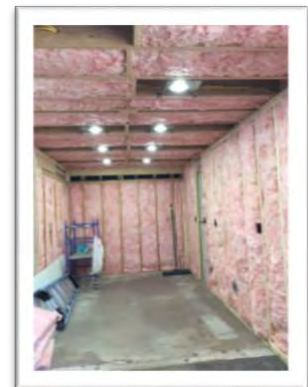
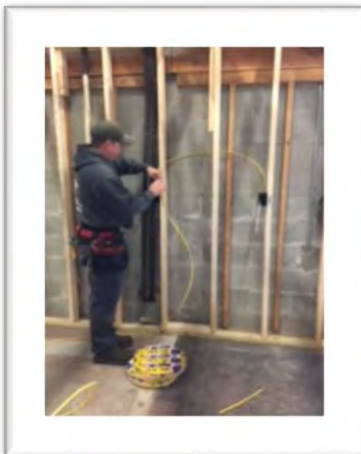


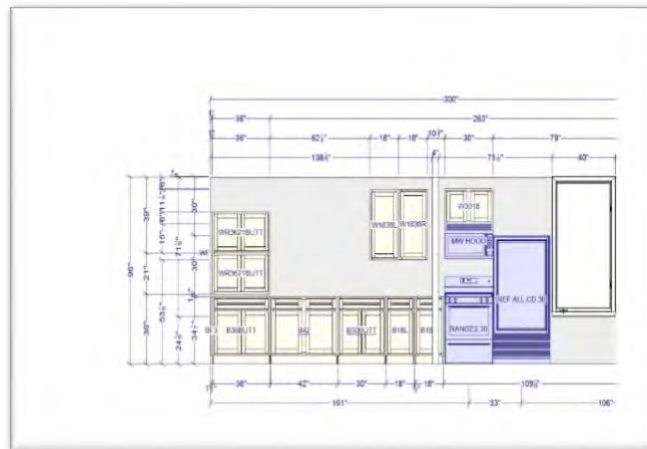
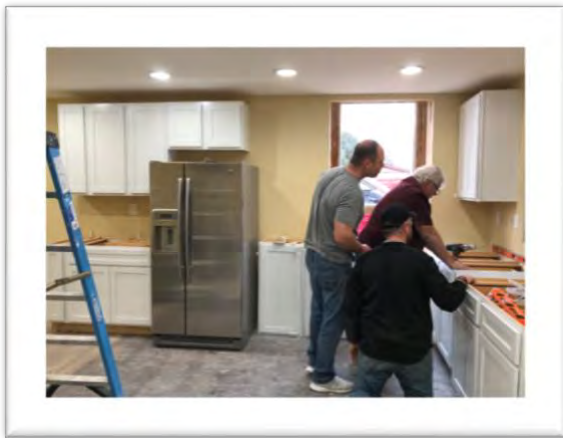
THE 2018 WILC Board - Linda Sumwalt, President; Kathi Weideman Secretary, thankful to Ann Vogel who was our Treasurer for three years and is retiring. We give her our gratitude for her three years of volunteer service to WILC as our Treasurer helping lead us in our vision from Waterford to Waukesha, the WILC MacArthur Building and improved finances. Welcome Tod Friske, new board member in early 2018, General Board Members: Stacy Peterson, Julie Reiels; and Craig Grenfell is our Parent Representative. Tod Friske will be our acting WILC Treasurer. We are always open to additional board members joining WILC.

Kitchen Progress in 2018: MCS Milw. Builders Carpentry Framing, Gemini Electric: LED lights, GFI outlets, appliance hookups, updated wiring; Rock River Plumbing, Teko Mechanical HVAC: updated ducts, venting; Drywall hanging, taping / mudding (many thanks to all the extra hours from volunteer Denise Friske; Tod Friske, Ben Friske, Terri Johnson, Deb Gil-Dorgan and her husband), Painting: Volunteer Ron Rousseau, Cabinets Volunteers: Ron Rousseau, Susie and Matt Thomas, friend Steve, Ben Friske, and Victor Uribe. Cabinets, countertops, flooring, and appliance installations: Ron Rousseau.

What is left? Install remainder of cabinets, countertops, sink, insinkerator and dishwasher, and floating vinyl flooring in January. Volunteers welcome!

Other improvements: Trees and shrubs trimmed, roofing repairs, HVAC inspection and duct repairs, and staff/students built more organic raised bed gardens for a wonderful growing season and harvest.





Program Changes: New WILC Daily Living, Prevocational and Vocational Program Additions in 2018 include Monthly Schedule, Communication Spiral, twice a year Parent/Staff Conferences, increased community outings including life recreational skills, vocational tours, public parks, exercise, learning how to and practicing biking with two wheel and trikes, restaurant program, personal and WILC shopping, public laundromat, and updated vocational area, more employer relationships increasing student employment opportunities, increased staff planning time, inviting all IRIS consultants to visit WILC and be a part of conferences, updating medical forms and information, and increased safety training to name just a few.

Looking Forward: We look forward to 2019 being an even great year ahead with the collaboration and participation of the WILC Board, Staff, Families and our Students. Thank you all for being an important part of all of our successes at Wisconsin Independent Learning College, Inc.